

*ICE BATH CHILLER
USER MANUAL*

*ICE BATH CHILLER
USER MANUAL*



ICE BATH CHILLER USER MANUAL



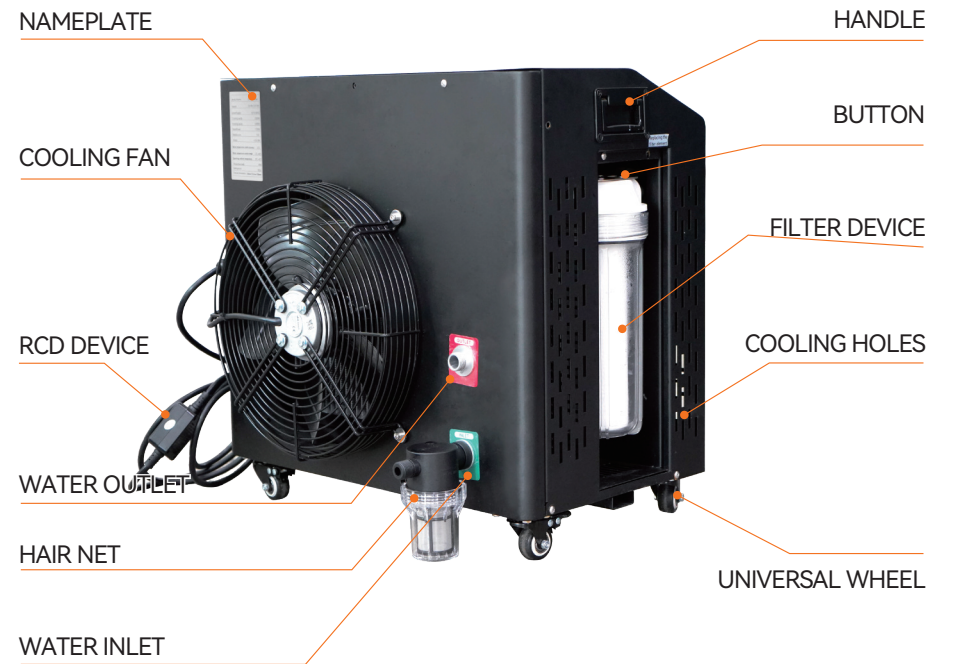
! CAUTION -(Possible injury or property damage)

- Do not install the chiller in closets, cabinets, or other small places.
- Never cover the intake or exhaust openings with clothes, towels, or other objects.
- Use extreme caution when operating near children, the elderly or infirm.
- Never insert fingers or foreign objects into the ventilation grilles or other parts of the chiller.
- Do not place heavy objects on the power cord or run it under carpets or rugs.
- Do not climb, sit, or stand on the chiller, or place objects on top of it.
- The operators of the chiller must be at least 18 years old.
- The ozone function will turn on automatically after the machine is turned on. It is recommended to use this function for five minutes and stop for five minutes.

Note: At present, Tuya can only support 2.4G WiFi signal. Therefore, before connecting the phone to the chiller, please confirm that the WiFi used by your phone is in the 2.4G frequency band. It will not be able to connect to the chiller, if it is in the 5G frequency band.



No further notice will be given, if the product function is upgraded. Contact us for the latest information.



Main Technical Data Sheet

Product Name	Ice Bath Machine Parameters						
Model No.							
Input Power Supply	100-127V 60Hz	220-240V 50Hz	120V 60Hz	220-240V 50Hz	100-127V 60Hz	220-240V 50Hz	220-240V 50Hz
Input Power	785W	760W	940W	1050W	1080W	1550W	1750W
Compressor Power	625W	430W	735W	850W	840W	1315W	1545W
Cooling Capacity	1500W	1500W	2730W	2500W	3545W	3500W	4665W
Heating Capacity	1980W	1920W	3605W	3200W	4500W		5500W
Usage Environment	0~45°C		0~45°C		0~45°C		0~45°C
Refrigerant	R32						
Temperature	3~42°C adjustable						
Ozone	Ozone Generator/UV						
Circulating Pump	Built-in Self-priming System						
Filter	Installed External						
Remote Control	IOS & Android APP, WIFI						
Moving Wheels	Yes						
Carry Handle	Yes						
Quick Connector	Yes						
Net Weight	34KG		36KG		45KG		56KG
Product Size	54x40x55cm		54x40x55cm		60x40x60cm		65x40x65cm
Certification		CB CE SAA	ETL	CB CE SAA		CB CE SAA	
Water Volume & cooling Time (23 To 5°C)	100L≥2.7H 200L≥5H		200L≥2.7H 400L≥5.8H		200L≥2.4H 400L≥5H		200L≥1.6H 400L≥3.5H

Standard Machine and Accessories



Plastic Wrench



Rubber Seals



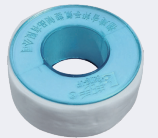
Water Pipes



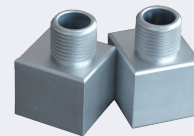
Adapter



Ice Bath Chiller



PTFE Tape



Quick Conectors



Filter



Filter Elements

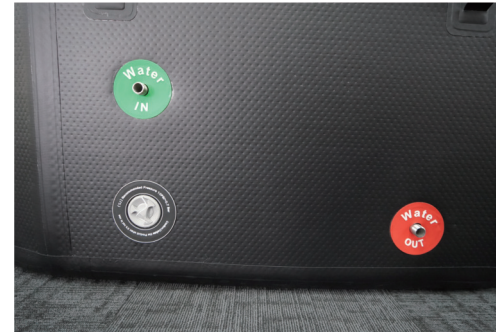
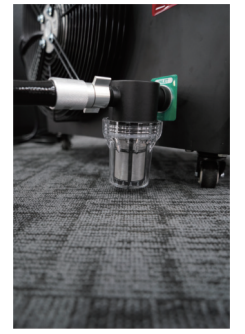
Quick Start Guide

Before You Begin:

- Inspect the water hoses and accessories.
- Check for O-rings at both ends of the water hoses. If missing, locate them in the accessory kit and install them.

Connecting the Chiller & Tub:

- Prepare the Tub & Accessories:
 - Your tub should either be empty for chiller setup or the water ports should be isolated with a valve.
 - Use PTFE tape to create water tight seals by wrapping it around any male threaded connections.
- Install the strainer at the water inlet of the chiller.
- Connect one water hose to the tub's inlet and the chiller's outlet.
- Connect the second water hose to the tub's outlet and the chiller's inlet.
- Final Check: Ensure all connections are secure. Check that the hoses are not kinked or pinched to ensure proper water flow and to prevent chiller alarms.



Fill the Tub:

- Before running or testing the chiller, fill the tub with fresh water until the water is above both the water inlet and outlet ports. If using isolation valves, open the valves now. Water should be able to freely flow into the hoses and up to the chiller.

Test the Chiller:

- Plug the chiller in. Before turning it on, press the test button. This is used to test whether the circuit breaker's leakage protection is working properly. After pressing the test button, the circuit breaker will simulate leakage in the circuit, the device will trip, and the light will go out. After it trips, press the reset button.



Let's Get Chilly!

Turn the chiller on using the power button located on the display. Water will now start circulating between the chiller and tub. After a few minutes, check if the filter house is full of water. If there is air inside, vent the housing by pressing the red button on top. If there are any leaks, use the white wrench to tighten the filter housing.



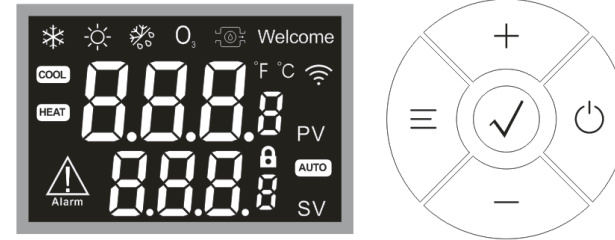
Connection Steps

1 Tems and Conditions

Dear Customer.

Thank you for choosing our products! For your convenience, please read the instruction manual carefully and follow the steps in the instruction manual.

2 Wi-FiStatus identification description



The Wi-Fi status mark is the Wi-Fi icon in the upper right corner of the display panel, which is used to indicate the Wi-Fi connection status. Please pay attention to the status of the icon when configuring the network to complete the network configuration quickly. The icon status is as follows:

Icon Status	Wi-Fi Status
Go out	Wi-Fi is initializing or the Wi-Fi module is faulty
Flash Mob (2Hz)	Wi-Fi is in distribution network status
Slow Flash (0.5Hz)	Wi-Fi is in distribution network status
Always On	Connected to cloud platform

3 Wi-Fi reset

Steps to reset:

- 1) After the controller is powered on, wait for Wi-Fi to complete initialization (that is, Wi-Fi chip triggering),
- 2) In the unlocked state, press and hold the (☰) key and (—) key for 6 seconds;
- 3) Within 15 seconds, if the Wi-Fi chip enters the flashing state, the Wi-Fi reset is successful: otherwise, the reset fails and you need to perform a button reset again or perform a power-off restart.

The Wi-Fi reset function is required in the following situations:

- 1) Due to the unstable Wi-Fi environment, it may happen that the device is not added successfully but the Wi-Fi network configuration has been completed. At this time, it is necessary to reset the Wi-Fi and add the network configuration again;
- 2) After device transfer (change of device owner), the device will be automatically deleted after Wi-Fi reset.

4 Download APP

Use your mobile phone to scan the QR code to download the APP, complete registration and log in. Also allow all access to this app for the best experience.

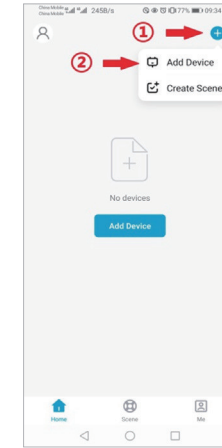


5 Mobile phone connection Wi-Fi

Make sure that the mobile phone and the device to be connected are in the same Wi-Fi environment. Select the 2.4GHz Wi-Fi network on the mobile phone and enter the password to connect the mobile phone to WiFi.

6 Add Device

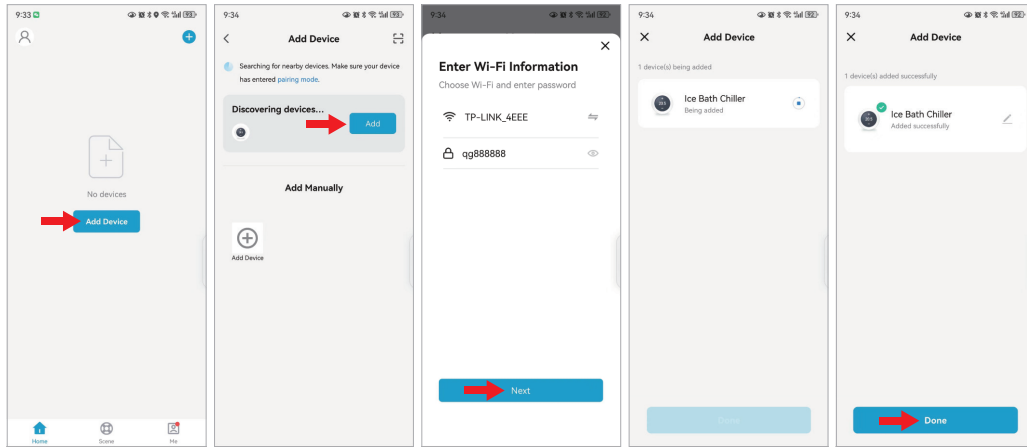
- 1) Turn on the mobile phone Wi-Fi and Bluetooth, and enable location access, please make sure that the mobile phone Wi-Fi and Bluetooth are both turned on to obtain the best network configuration test;
- 2) Open the "Huilian smart" APP, on the mobile phone, and select "Home" in the bottom navigation bar;
- 3) Click the "+" button in the upper right corner of the home page, or click the "Add Device" button in the center of the home page to enter the device adding interface;



- 4) In the device adding interface, please try to add the device in one of the following ways;

A、 Automatic device discovery

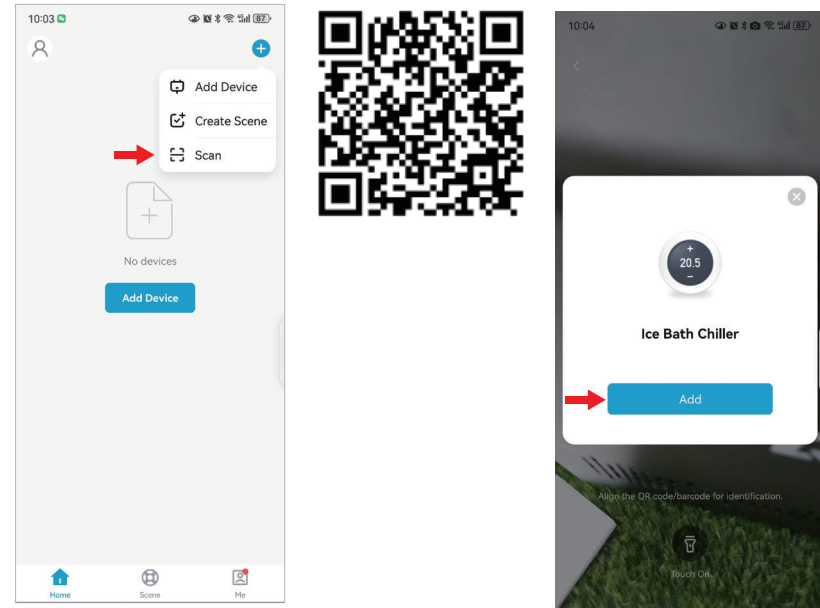
The phone will automatically discover available devices nearby. After discovering the device, follow the instructions in the figure below to complete the subsequent network configuration operations.

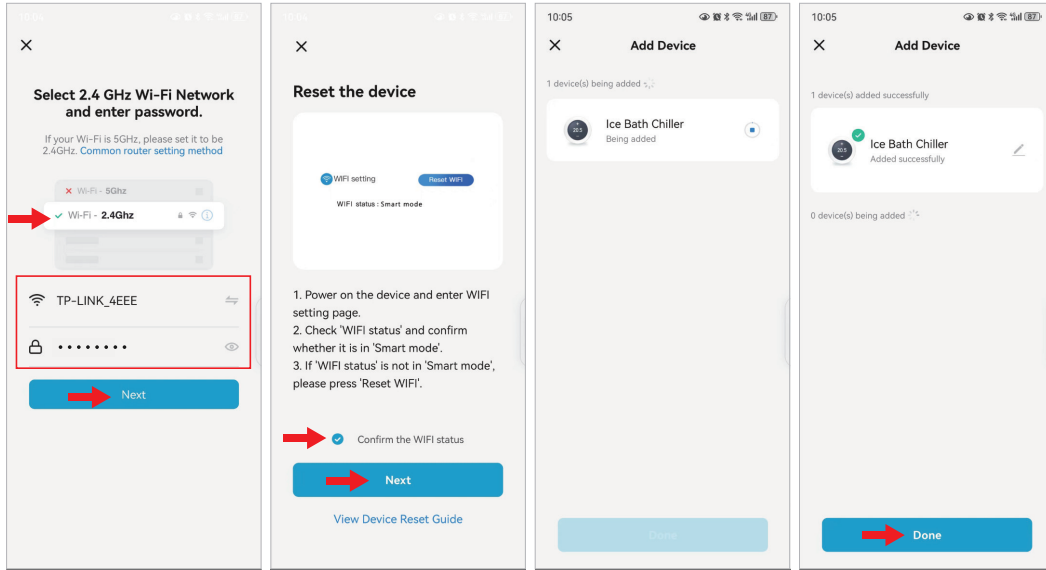


B、 Scan Code to Configure Network

Click the "Scan" icon in the upper right corner of the device adding interface, put the device network QR code into the box to automatically scan, and follow the steps below to complete the device adding operation.

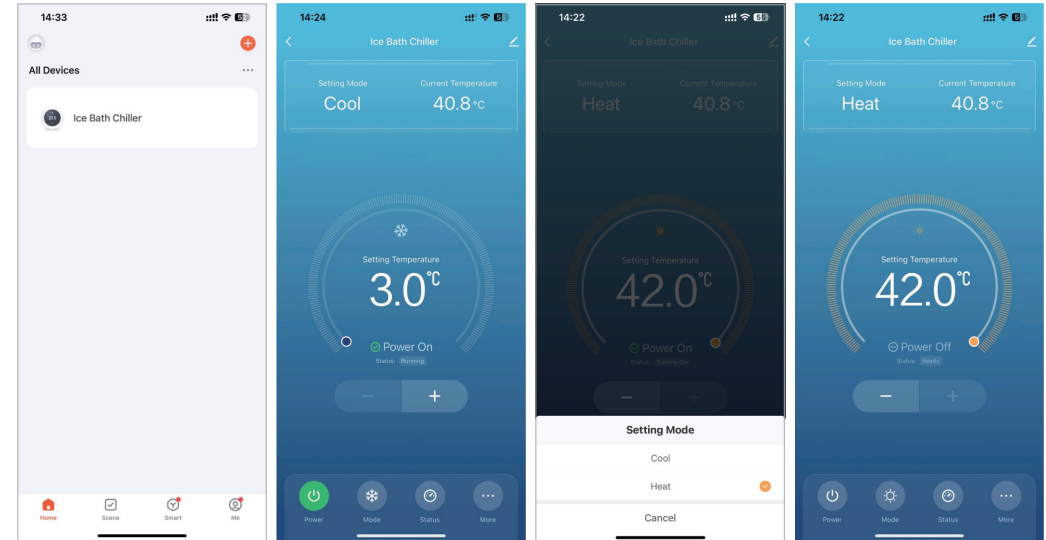
***Note 1:** If you have checked and confirmed that the WiFi status of the device is correct, under the step of "Reset the device", please directly check "Confirm the WiFi status" and click the "Next" button to directly configure the network without the need to reset the device.

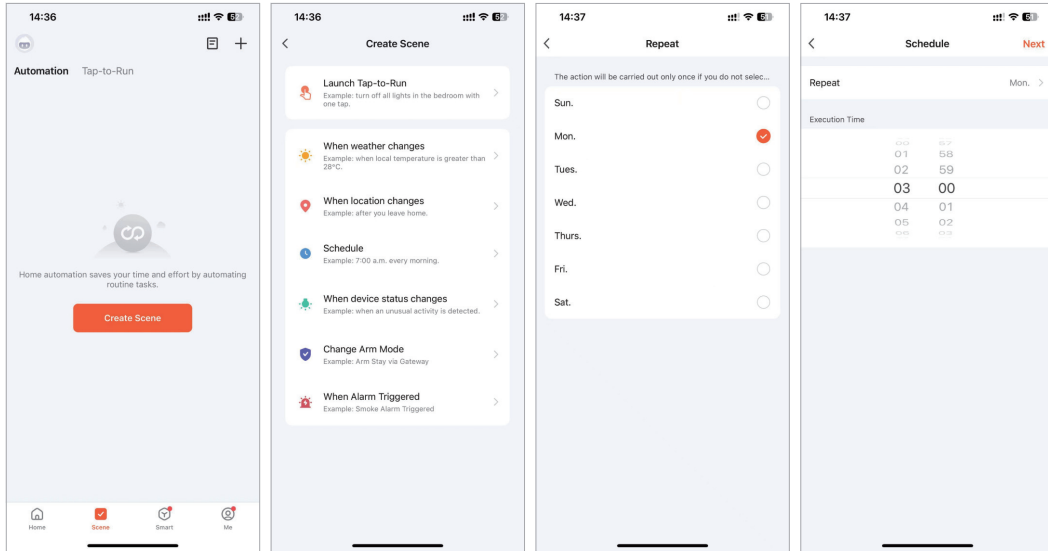




7 Add Device

Please scan the "Tuya Smart" code to download the software first, connect to my device and follow the following picture to operate. Click Ice Bath Chiller to enter the machine operation boot page, click Power to switch on and off, click Mode to switch refrigeration/heating, return to the main page, click Scene and then click Create Scene, and then click Schedule to select the time to start refrigeration/heating.





Suggested maintenance procedures (e.g. maintenance cycle, replacement of consumable parts):

- 1. Keep the water clean.
- 2. Pay attention to the filter element cleaning condition; if the filter element is dirty, it needs to be cleaned/replaced.
- 3. When there is no water circulation, is necessary to do air exhaust treatment in time.

Warnings and usage restrictions (e.g. not allowed to be used in certain environments or power sources):

- 1. Ensure that the product's rated voltage matches the household power voltage.
- 2. The machine must not be inverted or placed on its side.
- 3. Place the machine and water pool on the same horizontal plane (the machine must not be higher than the water pool, otherwise, the water circulation will not work).
- 4. The water in the tub must be more than 20cm above the bathtub outlet.
- 5. Do not turn on the machine for a long time without water circulation to avoid damaging the water.
- 6. Try to keep the water quality clean; do not use it without installing the filter element, otherwise, it is easy to cause the machine parts to block and cannot normally.
- 7. Ensure that the place where the machine is placed is a clean place, if the dust is too large, the fan will suck the dust into the machine, the work efficiency.
- 8. Do not put chemical substances to clean the water pool, which will damage the internal parts of the machine.
- 9. Do not touch the fan the operation of the equipment to avoid hurting your fingers.
- 10. During the operation of the equipment, it is strictly forbidden to touch the switch with your hand, and it not allowed to touch the electrical components.
- 11. After using the machine, wipe the water on the body clean as much as possible to avoid it being in a humid environment a long time, which will accelerate the rusting of the machine.
- 12. When not used for a long time, it is necessary to drain the water from the machine.

Cleaning and Maintenance

- 1) After every time use, the internal water of the machine needs to be drained, drain the residual water from the water inlet hole by tilting it, especially in winter, after each time use, it must be drained to prevent the internal water storage from being frozen and cracked.
- 2) The filter element needs to be cleaned and replaced in time.
- 3) The continuous use cycle every 7 days 24 hours requires a period of rest for the chiller.

WARNING

1) Risk of electric shock, can cause injury or death. **2)** Disconnect all remote electric power supplies before servicing. **3)** Use on single outlet circuit only. **4)** Suitable for commercial or industrial use only. **5)** Thermally protected.

FREEZE WARNING

To avoid damage, do not place the device that has not been drained of water in a place where the ambient temperature is below freezing.